

# **NADA Practice Leadership Group**

## Expression of Interest Guidelines

### [Application Form 2025](#)

Submissions close 31 October 2025

If you have any questions or queries about the NADA Practice Leadership Group, please contact Majella Fernando ([majella@nada.org.au](mailto:majella@nada.org.au))

## INFORMATION FOR APPLICANTS

### About NADA

The Network of Alcohol and other Drugs Agencies (NADA) is the peak organisation for non-government alcohol and other drugs services in NSW. We lead, strengthen and advocate for the sector. Our decisions and actions are informed by our members' experiences, knowledge, and concerns.

We represent approximately 87 organisational members that provide services in over 100 locations across NSW. Our members are diverse in their structure, philosophy, and approach to service delivery. They provide a broad range of alcohol and other drugs services, including health promotion and harm reduction, early intervention, treatment and continuing care programs.

We provide a range of programs and services that focus on sector and workforce development, data management, governance and management support, research and evaluation, sector representation and advocacy, and actively contribute to public health policy.

Together, we improve the health and well-being of people with living and lived experience of alcohol or other drug use across the NSW community. NADA has award-level accreditation under the Australian Services Excellence Standards (ASES), a quality framework certified by Quality Innovation and Performance (QIP).

Further information about NADA's programs and services is available on the NADA website at [www.nada.org.au](http://www.nada.org.au).

### About the NADA Practice Leadership Group (NPLG)

The NADA Practice Leadership Group (NPLG) was established in July 2015 and comprised 11 members representing a variety of specialist non-government AOD treatment services. All members are clinical practitioners and considered leaders in the sector as evidenced by their professional backgrounds, accreditation status and clinical experience.

The NPLG's vision is to connect clinical practice leaders in the NSW non-government AOD sector for the purpose of increasing the capacity of service providers to deliver person-centred, evidence-based practices to improve the wellbeing of clients and their networks of support.

Members acknowledge that they will be representing the sector, not necessarily the organisation with which they are employed.

The group meets four times a year and is open to other members/organisations as guest speakers by invitation.

## **NPLG background**

The NPLG was formed due to NADA's identification of key issues impacting on the sector and the need for a group that:

- provides an avenue to consult with a broader group of members with sector experience and a range of specific specialist skills to inform NADA's sector advocacy and program development.
- demonstrates the professionalism of the NGO AOD sector who are seen as key players in the delivery of specialist AOD service delivery, providing advice to all levels of government.
- develops clinicians to represent the NGO AOD sector in NSW, especially where the NGO sector is underrepresented at government working group meetings, cross-sector meetings, etc.
- demonstrates the effectiveness of the practice-based evidence of our sector and translates it into evidence-based practice.
- provides advice to support NADA's partnerships with research institutions and other organisations to further develop and enhance NGO AOD service delivery.

**Please note:** *The NPLG does not replace NADA's existing methods for broader consultation with the sector, it seeks to enhance those methods.*

## **NPLG aims**

The overall purpose of the NPLG is to inform the development of NADA policy, advocacy, and sector program development in relation to person-centred and trauma informed practices. It provides a mechanism for stakeholder consultation with experienced, committed and skilled practitioners. Furthermore, the NPLG seeks to increase the capacity of the specialist non-government AOD service sector to actively participate in shaping strategic directions at multiple policy and planning levels.

## **NPLG activities include:**

- Participating in quarterly meetings
- Determining priorities through sector and stakeholder consultation
- Informing NADA's work and guiding the direction of good clinical practice
- Providing feedback on relevant NADA and government policy and program development materials, where appropriate
- Identifying areas for sector development
- Informing the development of practice focused research endeavours within the sector
- Establishing and leading specialist working groups
- Informing in program creation for NADA conferences and ad-hoc events, as needed

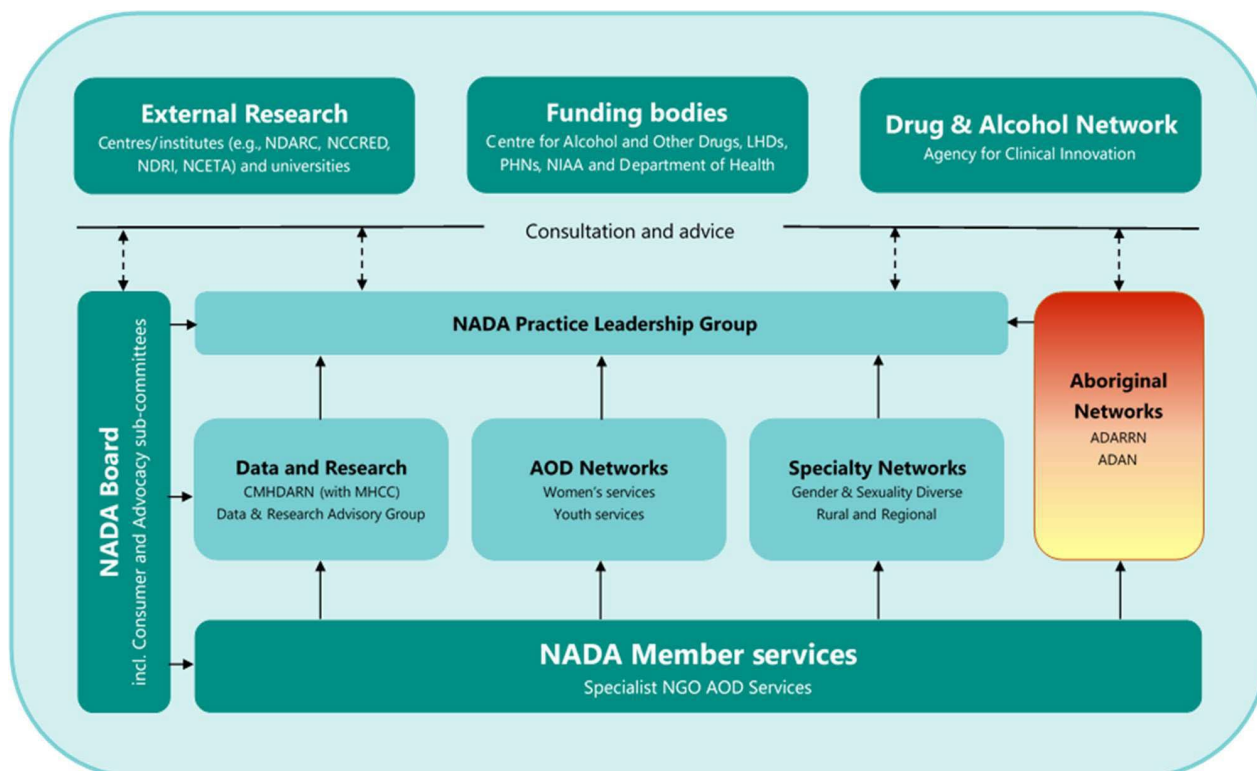
## **NPLG membership**

The NPLG consists of 15 members representing a variety of specialist non-government AOD treatment services. The current members of the NPLG can be viewed [here](#).

The NPLG is chaired by NADA's Clinical Director.

## Existing networks' role

NADA supports, or is involved with, several existing networks. NADA has sought representation from these groups for the NPLG to ensure appropriate representation. See diagram below.



## NADA's role

NADA is responsible for administering the expression of interest process, coordinating the NPLG and its members, as well as hosting and chairing meetings.

NADA provides secretariat support, communication and coordination to the NPLG, arranges travel for members who are not located in the Sydney area, facilitates access to journal articles and other literature to support the work of the NPLG, and seeks opportunities for training to support NPLG members.

## APPLICATION AND ELIGIBILITY GUIDELINES

### Current NPLG vacancies

NADA is looking to fill vacancies on the NPLG and is seeking expressions of interest from NADA membership.

#### Specific skills and experience being sought:

Aligned to the NPLG skills matrix of current members, NADA will prioritise applications as below:

- Those who identify as gender and/or sexuality diverse or LGBTIQ+
- Those who represent culturally or linguistically diverse (CALD) populations
- Those who identify as an Aboriginal or Torres Strait Islander community member

- Those with experience working with priority population groups: LGBTQIA+, Aboriginal and Torres Strait Islander peoples, CALD people, youth, women, criminal justice clients or other groups
- Early career – professionals with less than five years experience who have chosen a career in the AOD sector
- Research and evaluation – professionals who have experience in research and evaluation

### **Eligibility criteria**

- ▶ Be currently employed in a leadership position in a NADA member organisation
- ▶ Have demonstrated skills and experience providing practice-based leadership in the NGO AOD sector, as described in the sections above.
- ▶ Have at least 5 years clinical / therapeutic experience, or other related AOD service delivery experience
- ▶ Be currently involved in clinical / therapeutic practice
- ▶ Have the capacity to participate in NPLG activity.
- ▶ Have support from CEO/Manager of organisation to participate in NPLG

### **Specific skills**

The NPLG collects information from applicants on areas of specialisation. We will maintain a database of specialisation in the sector that the NPLG or NADA can contact where specific skills are required. This could include:

- Treatment intervention modalities
- Workforce development, including supervision and support
- Mental health
- Health promotion and harm reduction
- Data management
- Research and evaluation methodology and design
- Specialisation with specific populations

### **NPLG membership term**

The position with the NPLG will commence at the next meeting on 3 December 2025. NPLG members will be engaged for a 2-year term, with a review of continued involvement at 18 months.

## **SELECTION PROCESS**

### **Selection panel**

Applications will be assessed by a small panel and will need to meet the eligibility requirements outlined. The selection panel will review all applications to determine a list of successful proposals. The panel will include representative/s from NADA, a NADA Board member, and a consumer representative.

### **Confidentiality**

All applications submitted will be treated with confidence. However, note that details regarding the successful applicant will be made publicly available through the NADA website to promote the NPLG, as well as a brief biography and photograph of all group members.

## APPLICATION DETAILS

### Application closing date

Applicants must seek approval from their organisation prior to applying. Applications close 31 October 2025.

### Late applications

The selection panel will not accept applications after the advertised closing date.

### Where to send applications

Please submit your application and upload your CV via this [link](#):

### Key dates

Expressions of interest applications open	<b>7 October 2025</b>
Applications close	<b>31 October 2025</b>
Review of applications and selection of shortlist	<b>15 November 2025</b>
Applicants notified of outcomes	<b>25 November 2025</b>
Next scheduled NPLG meeting	<b>3 December 2025</b>

## SUCCESSFUL APPLICANTS

Successful applicants must be able to:

- Provide informed input and advice for the development of the broader NGO AOD sector
- Attend and participate in quarterly meetings with at least one face-to-face meeting in Sydney (80% annual meeting attendance required)
- Lead or participate in working groups where required
- Promote the NPLG and contribute to an inclusive and collegial ethos
- Participate in program development / execution for NADA conferences and events as required
- Participate and represent the NPLG at external committees such as the NSW Health Quality in Treatment (QIT) committee and the NADA Advocacy subcommittee.
- Provide a brief biography and photograph. The biography and photograph will be published on the NADA website to promote the expertise of the NPLG.

## FOR MORE INFORMATION

Further information about the NPLG, please contact:

Michele Campbell  
Clinical Director  
NADA  
[michele@nada.org.au](mailto:michele@nada.org.au)

Majella Fernando  
Project Coordinator  
NADA  
[majella@nada.org.au](mailto:majella@nada.org.au)